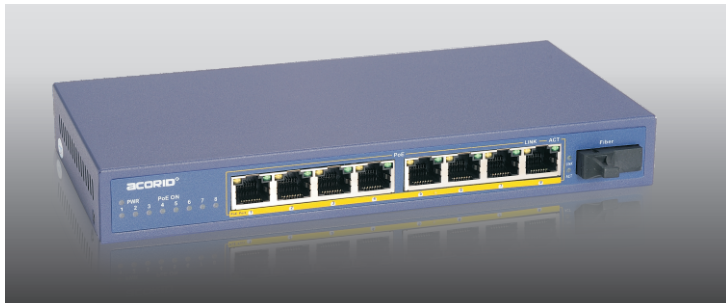


LS5008PF Series 8 ports PoE Fiber Switch



Features:

- Fully IEEE802.3af standard compliant
- Support PoE power up to 15.4W for each PoE ports
- Auto detect powered device(PD)
- Safe and reliable power to most of PoE end device
- Plug & Play. No configuration required
- Reliable and great value

Introduction:

This PoE switch provides power and data from a single point, using Power over Ethernet(PoE) over a single Cat-5 cable. LS5000 series can be used for any 10/100Mbps link and supply industry-standard IEEE 802.3af power. Advanced auto-sensing algorithm gives power to 802.3af end devices, In addition, the PoE switch automatically determines PoE requirements, speed, duplex, .Easy to operate and reliable.

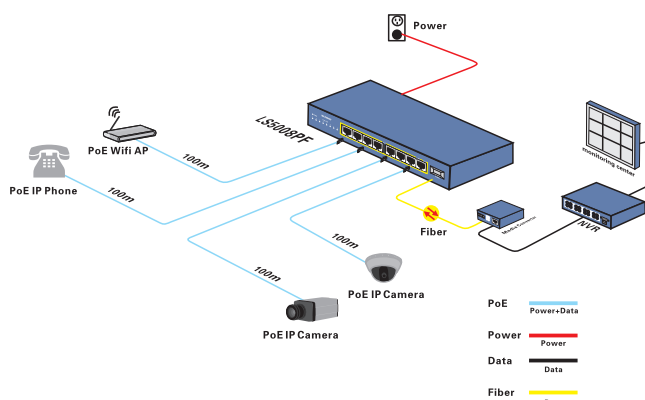
This PoE switch is ideal for powering PoE devices such as IP cameras, WLAN access points, IP phones, office access control systems, and other PD devices and offers a line of high quality products that provide a total solution for ethernet application in different environments.

Speciafication:

Technology	
Network Standards	<ul style="list-style-type: none"> • IEEE802.3i 10BASE-T • IEEE802.3u 100BASE-TX • IEEE802.3x Flow Control
PoE power	<ul style="list-style-type: none"> • 15.4W per port(IEEE802.3af) • Wiring:Data & power provided over pairs 1/2 and 3/6 or 4/5(+) and 7/8(-) • Cable: UPT cat. 5 or higher
Processing types	<ul style="list-style-type: none"> • Store-and-forward • Half-duplex back pressure and IEEE 802.3x full-duplex flow control
Buffer memory	• 48Kb embedded memory per unit
Network latency	• Less than 20us for 64-byte frames in Store-and-forward mode
Power	
Input	• 48VDC input
PoE power consumption	• 15.4W

Mechanical	
Casing	• Metal case
Dimension	• 217x105x28mm(LxWxH)
Weight	• 0.63KG
Installation	• Rack mounting
Interface	
LED Indicators	<ul style="list-style-type: none"> • System:Power,PoE Maximum power • Per port:Link.Activity,.Speed PoE active,PoE error
Environment specification	
Operating temperature	• 0-55°C (32-104°C)
Storage temperature	• -10-70°C (14-158)
Operating humidity	• 90% max relative humidity, non-condensing
Storage humidity	• 90% max relative humidity, non-condensing
Regulatory Approval	
Safety	• CE/ROHs/FCC
Warranty	• 1 year

Application Diagram



Ordering Information:

- LS5008PF, 8 ports PoE Fiber switch, 10/100Mbps. IEEE802.3af. 100m.